

VHF CONTESTING-ROVER STYLE !

MATT HOLDEN KØBBC

DAVE FUGLEBERG WØZF

BILL MITCHELL AEØEE



AGENDA

- VHF Contesting Basics
- Why be a rover?
- Roving Strategy
- Rover equipment
- Rover challenges
- Getting started
- Tips & Tricks
- Q&A



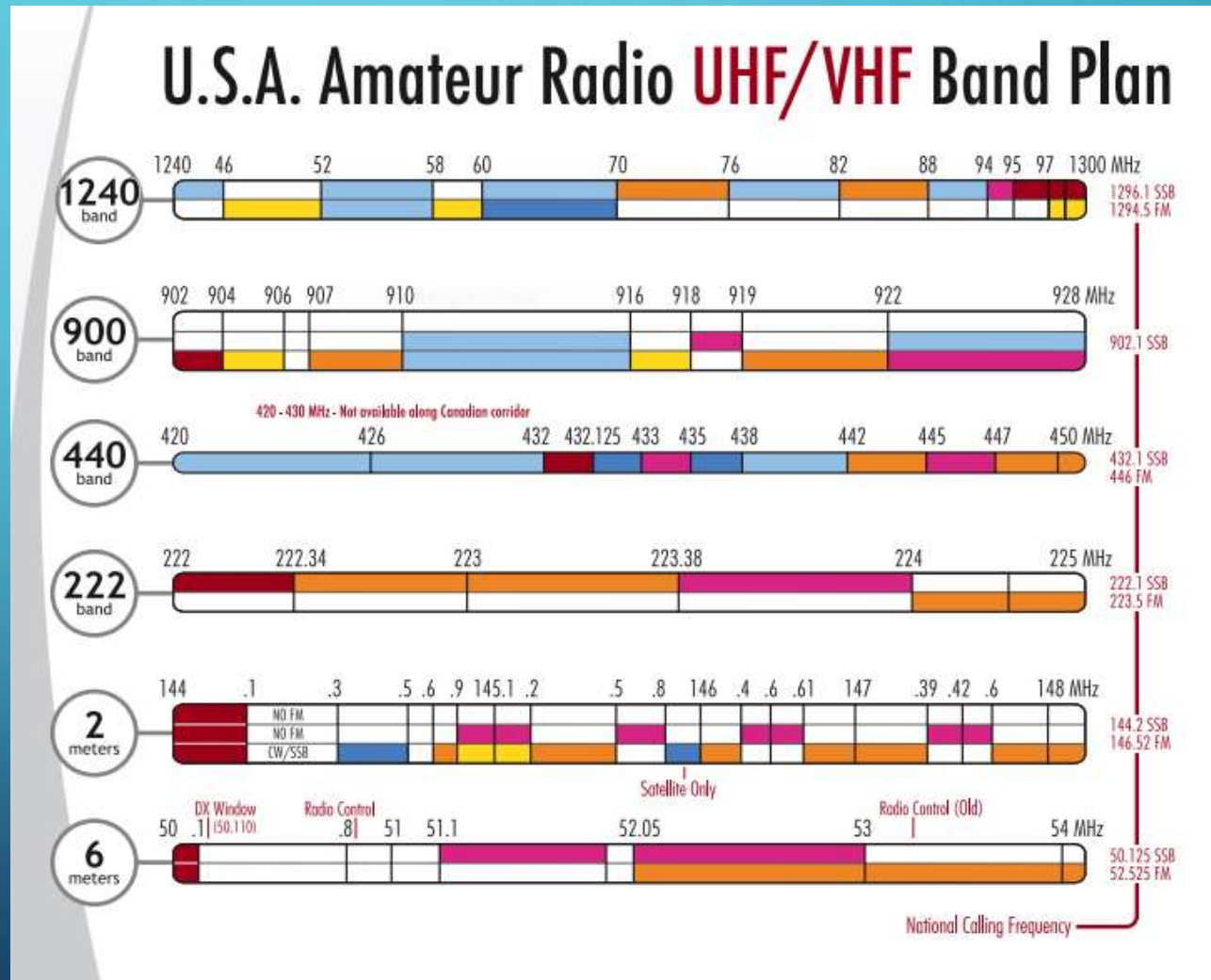
VHF CONTESTING – THE BASICS

- Bands
- Contests
- Classes
- Grid Squares
- Contest QSOs

VHF Contesting 101

VHF CONTESTING – THE BASICS

- Bands
- Contests
- Classes
- Grid Squares
- Contest QSOs



VHF CONTESTING

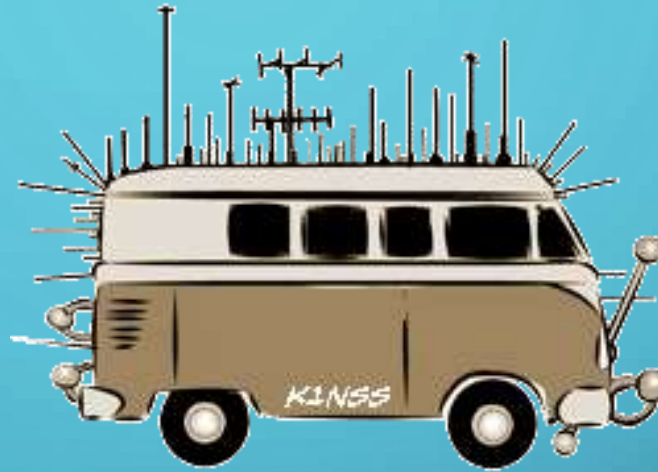
- Bands
- Contests
- Classes
- Grid Squares
- Contest QSOs

VHF contest calendar 2017

NAME	DATE
	confirmed through fall microwave Sprint
WASH 2m Simplex Contest southwest PA	Saturday, 14 January (7 PM - 11 PM EST) phone, CW, digital
ARRL January VHF Contest	Saturday, 21 January (1900 UTC) - Monday, 23 Jan (0359 UTC)
Maine FM Simplex Challenge	Sunday, 12 February (12:00 noon - 4:00 PM EST)
spring 2m Sprint	Monday, 17 April (7 PM - 11 PM local)
spring 222 Sprint	Tuesday, 25 April (7 PM - 11 PM local)
spring 432 Sprint	Wednesday, 03 May (7 PM - 11 PM local)
SBMS 2.3 GHz and up Contest	24 hrs total Sat, 06 May (6 AM local) - Sun, 07 May (11:59 PM local)
fall (southern hemisphere) Araucaria VHF Contest	Saturday, 06 May (0000 UTC) - Sunday, 07 May (1600 UTC) contact: py5vc73@gevaerd.org (remove 73)
spring Microwave Sprint (902 MHz and above)	Saturday, 06 May (8 AM - 2 PM local)
spring 6m sprint	Saturday, 13 May (2300 UTC) - Sunday, 14 May (0300 UTC)
ARRL June VHF Contest	Saturday, 10 June (1800 UTC) - Monday, 12 June (0259 UTC)
SMIRK 6m Contest	Saturday, 18 June (0000 UTC) - Sunday, 19 June (2359 UTC)
CQ Worldwide VHF Contest	Saturday, 15 July (1800 UTC) - Sunday, 16 July (2100 UTC)
222-MHz-and-Up Distance Contest	Saturday, 05 August (1800 UTC) - Sunday, 06 August (1800 UTC)
Make More Miles on VHF 144 MHz Meteorscatter Sprint Contest	Friday, 11 August (2200 UTC) - Sunday, 13 August (21:59:59 UTC)
10 GHz and Up Contest - First Round	24 hrs total Saturday, 19 August (6 AM local) - Sunday, 20 August (12 midnight local)
fall 6m Sprint	Saturday, 26 August (2300 UTC) - Sunday, 27 August (0300 UTC)
ARRL September VHF Contest	Sat. 09 September (1800 UTC) - Mon. 11 September (0259 UTC)

VHF CONTESTING – THE BASICS

- Bands
- Contests
- Classes
- Grid Squares
- Contest QSOs



Single Op All Band(Low/High)
Single Op Portable
Single Op 3-Band
Single Op FM
Rover
Limited Rover
Unlimited Rover
Unlimited Multi-Op
Limited Multi-Op



VHF CONTESTING – THE BASICS

- Bands
- Contests
- Classes
- Grid Squares
- Contest QSOs



VHF CONTESTING – THE BASICS

- Bands
- Contests
- Classes
- Grid Squares
- Contest QSOs



VHF CONTESTING – THE BASICS

- Bands
- Contests
- Classes
- Grid Squares
- Contest QSOs



VHF CONTESTING – THE BASICS

- Bands
- Classes
- Contests
- Grid Squares
- Contest QSOs

**CALL and GRID SQUARE are the
ONLY IMPORTANT INFORMATION
and MUST BE COPIED.**

ROVERS sign with /R or /ROVER

WHY BE A ROVER ??

- Multipliers
- Locations
- Activity
- Fun
- Funny looks



VHF ROVER STRATEGY

- Grid square strategy
 - Rare grids vs 'gun and run'
 - North/South vs East/West
 - Grid corners
- Spotting & coordination
- Band selection
- Class



VHF ROVER STRATEGY

- Grid square strategy
- Spotting & Coordination
- Band selection
- Class

The screenshot shows a web browser window with the address bar displaying `www.w0uc.com/spots.html`. The page title is "Upper Midwest VHF+ spotting page". The page content includes instructions for using the spotting system, a form for submitting spots, and a table of recent spots.

Upper Midwest VHF+ spotting page

This page is for the use of stations in the Upper Midwest (MN WI IA ND SD IL) and stations with current propagation to the Upper Midwest. Fixed stations are encouraged to spot Rovers at each move. (Comments to W0UC via ARRLdotnet)

Short chats are welcome - please limit chats to current live activity. The "new rules" allow use of chat to help two stations find each other (including peaking antennas), but once the contact has commenced further coordination must be done via Amateur Radio.

You can also text your spot to 612-440-SPOT (612-440-7768). Please use the following format: Call - Freq - Grid - [add'l info]
Please [fill out this form](#) to map your phone number to your callsign in the spreadsheet below.

[Collapse](#)

Call Spotted Freq Grid Info Spotted by Submit

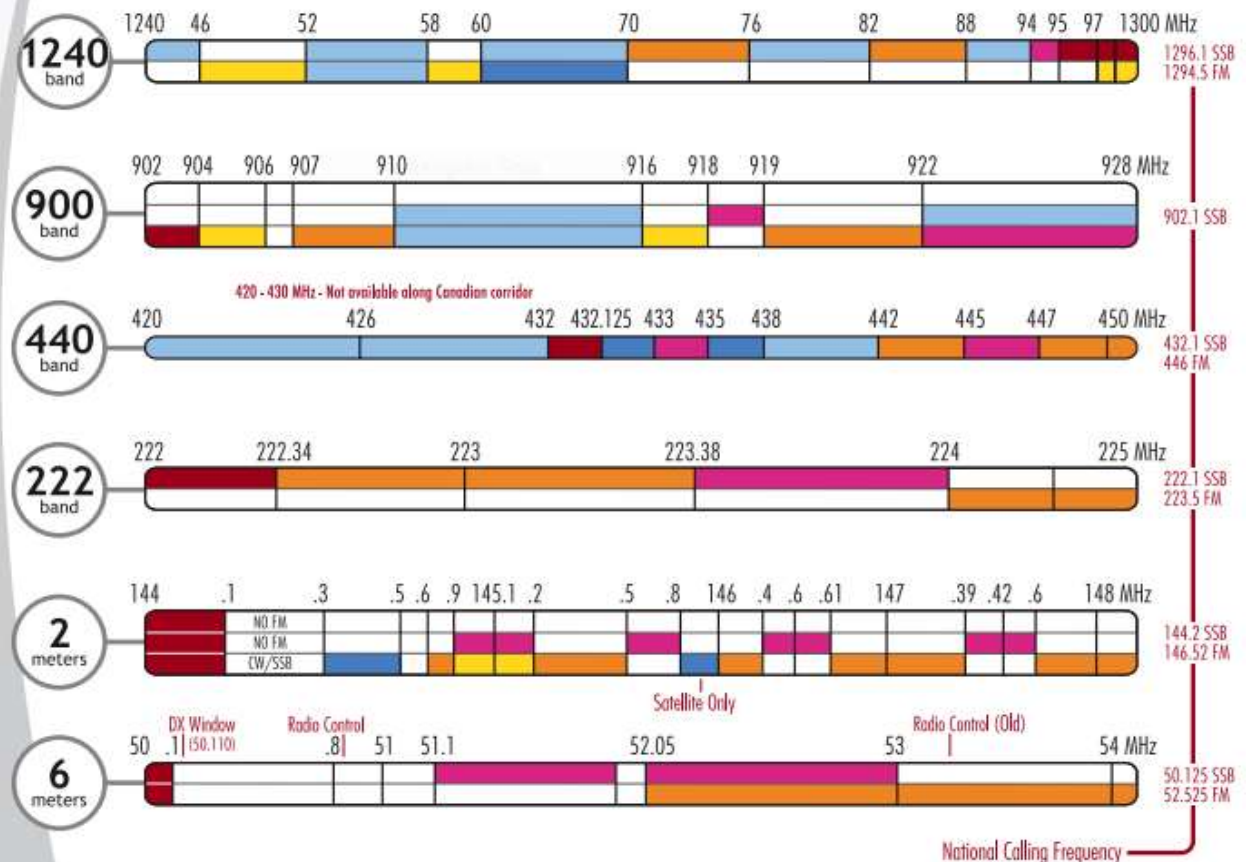
	A	B	C	D	E	H
196	080517 1838	W0LGQ	432.1	EN21ci	let's try 902/1296 later	W0UC
197	080517 1824	W0FZ/R			bearing to me 9deg	K0AWU
198	080517 1823	W0ZF/R	432		looking	K0AWU
199	080517 1821	W0ZF/R	432.13	EN24xx	beaming east to twin cities	W0ZF/R
200	080517 1818		432.1	EN44hr	Looking toward W9EWZ	W0UC
201	080517 1818				Good signals Paul with lots of QSB ... Thanks and GL	K0AWU
202	080517 1813	W9EWZ	432100	EN52kr	I am now calling and listening 432100.	
203	080517 1812	W0UC			There and gone 902	K0AWU
204	080517 1801				I am here	K0AWU
205	080517 1800	W0UC			I am here	

VHF ROVER STRATEGY

- Grid square strategy
- Spotting & Coordination
- Band selection
- Class

Single Op All Band(Low/High)
Single Op Portable
Single Op 3-Band
Single Op FM
Rover
Limited Rover
Unlimited Rover
Unlimited Multi-Op
Limited Multi-Op

U.S.A. Amateur Radio **UHF/VHF** Band Plan



ROVING EQUIPMENT

- Radios & transverters
- Antennas
- Location finders
- Logging considerations



ROVING EQUIPMENT

- Radios & transverters
- Antennas
- Location finders
- Logging considerations



ROVING EQUIPMENT

- Radios & transverters
- Antennas
- Location finders
- Logging considerations



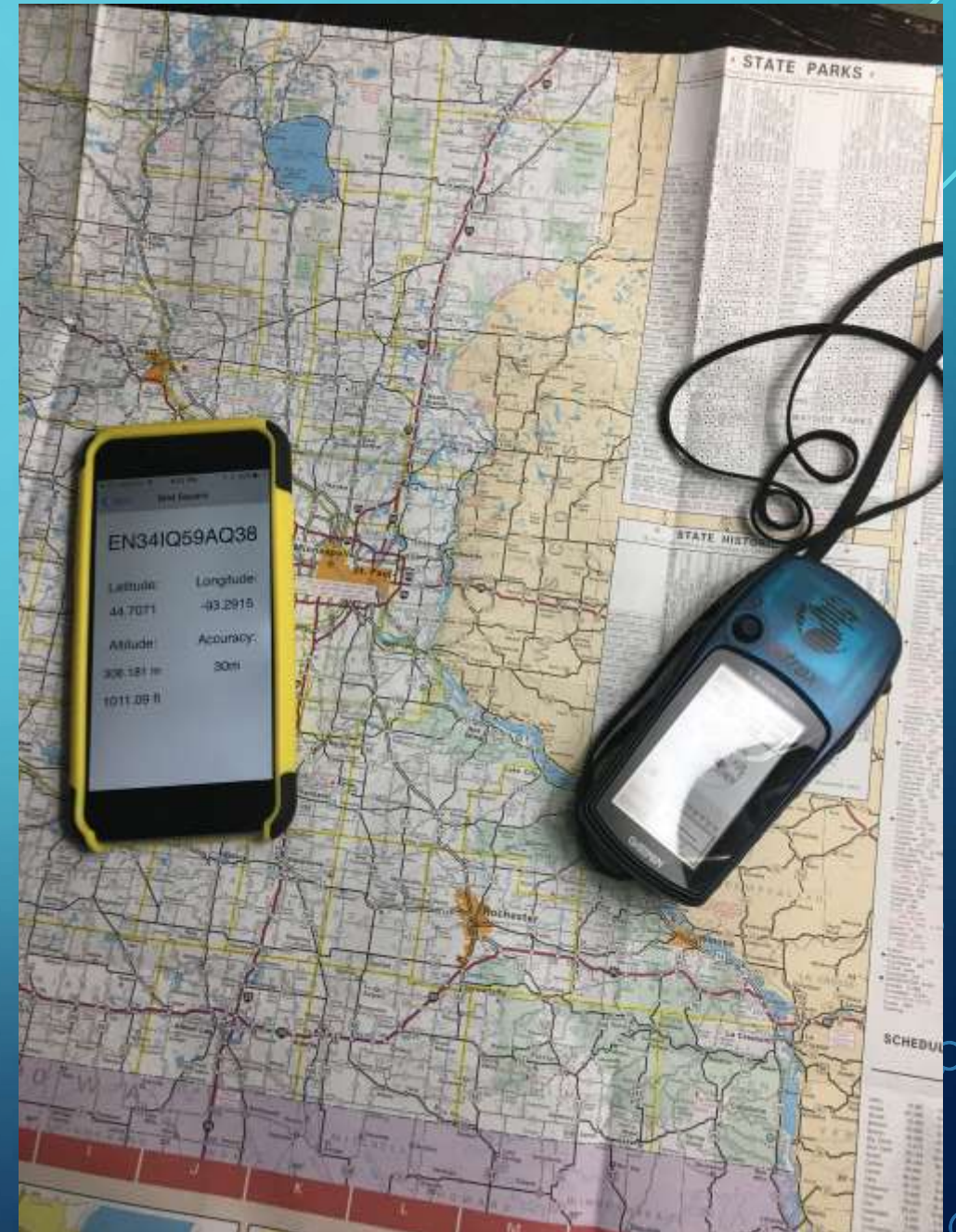
ROVING EQUIPMENT

- Radios & transverters
- Antennas
- Location finders
- Logging considerations



ROVING EQUIPMENT

- Radios & transverters
- Antennas
- Location finders
- Logging considerations



LOGGING CONSIDERATIONS

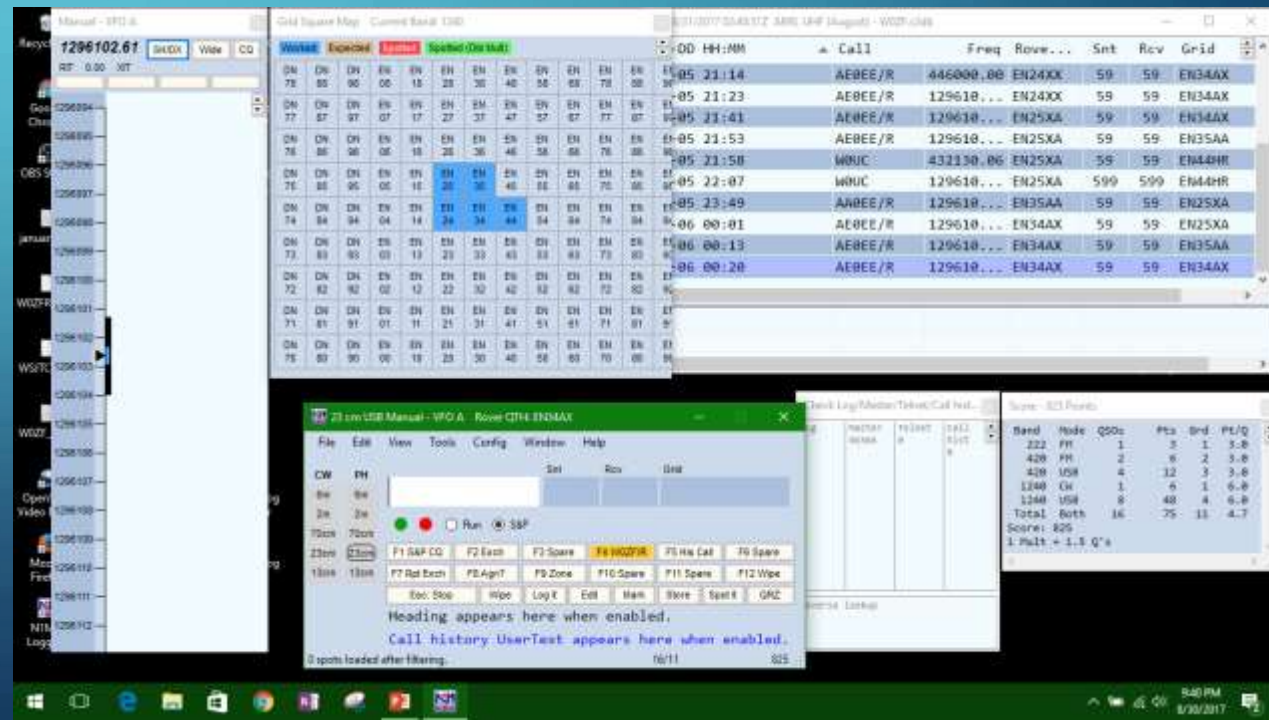
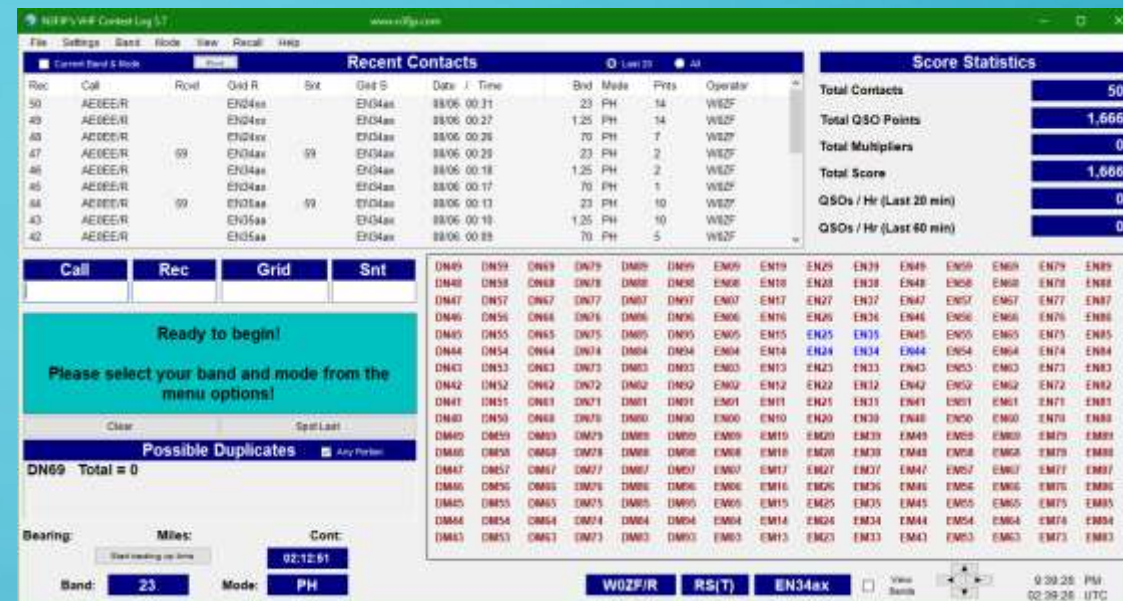
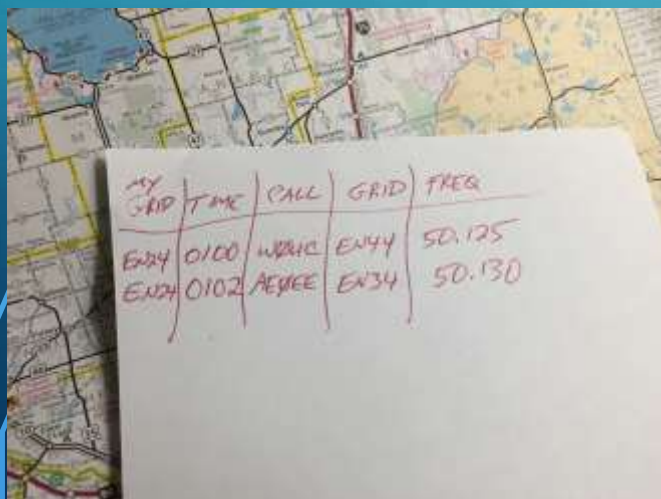
N3FJP

N1MM+

Writelog

RoverLog

Paper Logs



ROVER CHALLENGES

- Weather
- Terrain
- Power
- Height restrictions
- Health & safety



GETTING STARTED

- Easier than you think!
- Start with what you already have
- “Best bang for the buck” improvements
- 6 P.M. Saturday and Sunday FM QSO party



TIPS & TRICKS

- Take the high ground
- Post your plans
- Rover packs
- Weak signal wonders



TIPS & TRICKS

- Advance Preparation



START HERE

- 6 P.M. Saturday and Sunday FM QSO hour
- 146.55 (or call on 146.52 and then move up)
- 446.00
- Submit your log in the FM only category

QUESTIONS?



MORE INFORMATION

Northern Lights Radio Society

www.nlrs.com

ARRL

www.arrl.org/june-vhf

W0ZF YouTube Channel

www.youtube.com/user/W0ZF

